

November 21-28

Today, November 21	<i>Christ the King Sunday</i>	
8:45am	Worship	Sanctuary
9:35am	Hospitality	
9:45am	Sunday School & Adult Education	
11:00am	Worship	Sanctuary
12:00pm	Hospitality	
12:15pm	Handbell Choir	Sanctuary
Monday, November 22		
9:00am	Men's Biking	
1:00pm	Grace Circle	Homes
Tuesday, November 23		
9:30am	Lectionary	Room 14
Wednesday, November 24		
7:00pm	Thanksgiving Eve Service	Sanctuary
Thursday, November 25—Office Closed		
Friday, November 26—Office Closed		
9:00am	Men's Hiking Group (<i>note change in day</i>)	
Saturday, November 27		
8:00am	Men's Breakfast	Plum Delicious
Sunday, November 28	<i>First Sunday of Advent</i>	
8:45am	Worship	Sanctuary
9:35am	Hospitality	
9:45am	Sunday School & Adult Education	
11:00am	Worship	Sanctuary
12:00pm	Christmas at Newport	
12:00pm	Hospitality	
12:15pm	Handbell Choir	Sanctuary



Weekly Announcements

November 21, 2010

If you are visiting today, welcome!

- Please look in the Friendship Folders in the sanctuary chair racks for our visitor cards and ribbons. We invite you to wear the blue ribbon so we can get to know you, and to fill out the card and leave it in the offering plate. Please pick up a welcome bag in the narthex.

If you attend regularly

- Please give anyone wearing a blue "Visitor" ribbon your warmest Newport welcome.

Today at Newport

- **Friendship Table:** Please stop by today and sign cards for those in our congregation who need a greeting, a prayer, or a boost.

Christian Education Opportunities—9:45-10:35 a.m.

Preschool Class – Room 25*

K – 5th Grade – Room 29*

*Preschool and K-5 start in Room 27 for "Joyful Express" Children's Choir

Youth (Mid and Senior High) – Youth Room (lower level)

Adults:

- **ACE:** Year One: The world into which Jesus was born with Rob McClure—
Today's session: Religion in One CE
- **Parenting Faithfully**—Room 14 (every Sunday unless noted)

Upcoming Education Opportunities

- Faith Stories led by Jim Patten—November 28 through December 19 (Advent)

November 28	"The Deacon" by Mary Gordon
December 5	"Saved" by Elizabeth Cox
December 12	"God's Goodness" by Marjorie Kemper
December 19	"Resurrection of a Life" by William Saroyan

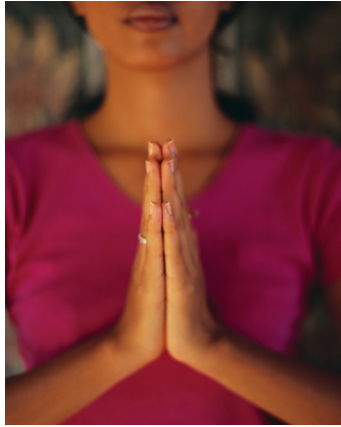
These stories are in the book "Faith Stories" edited by C. Michael Curtis.

OFFICE HOURS

The office will be open Monday through Thursday from 9:00 a.m. to 4:00 p.m. and Friday from 9:30 a.m. to 12:30 p.m.

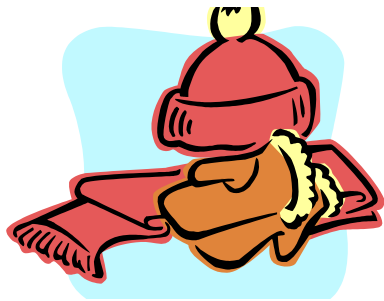
For information on any church activities, events or committees, call the office, 425-746-6111,

or email us at office@newportpres.org or visit our website, www.newportpres.org



Prayer Concerns and Support Opportunities

- **We have an active Prayer Chain.** If you have a concern for which you would like prayers, contact Carib Smallman, 206-588-1277, or Judy Schwab, 425-391-4167. To be listed in the printed list of prayer concerns, contact the church office, 425-746-6111.
- **Peace Candle:** The votive candle on the communion table is a prayerful reminder of those in danger in the Middle East, including our military and civilians and the people of Iraq, Afghanistan and other nations.



WARM FOR WINTER

Today we are dedicating the handmade scarves and hats that were knit for the homeless in the Seattle area. Thank you all for your contributions. They will be greatly appreciated as we approach the cold winter months. Mary Hanke



The Sophia Way—How you can help!

Here are the holiday needs for assisting the homeless women: help wrap Christmas presents; collect Christmas meal food items; help with holiday shopping; deliver holiday tree/ decorations; give tree gifts; seek gift certificates. Contact the Sophia Way Christmas Coordinator at Margaret@sophiaway.org or call 206-226-5358.

Thanksgiving Eve Worship

Please mark your calendars for Newport's delightful Thanksgiving Eve worship service on November 24 at 7:00 p.m. You are encouraged to bring an offering of healthy, non-perishable food for our local food bank. Hot cider, cookies and a brief time of fellowship will follow the service. **Bakers are needed to supply the treats for this; if you're willing to bring a plate of cookies, pumpkin bread or other finger dessert, please let Janet DeWater know.** Thanks!

Photo sessions continue

Be sure to arrive on time. If you didn't get signed up, call 800-866-2263 ASAP. **There will be an information sheet to fill out for the office. Please fill it out completely so our directory information is up-to-date.**



The Worship Committee has prepared an Advent Booklet to assist you in your spiritual preparation for Christmas. Please pick up a copy in the atrium for your family to use this Advent.



Christmas at Newport

Sign up now for next Sunday's Christmas at Newport from 12:00-1:30 p.m. Let us know if you will be attending the meal and if you will bring cookies to share for dessert. There will also be a special nativity craft. Sign up at the table in the Atrium.



Holiday Concert—Chorus Cares

The Seattle Women's Chorus will be guests at the upcoming Cris Williamson's Holiday Concert on December 10 and 11 at Seattle Unity Church. Proceeds will benefit single women cancer patients with financial need. For more information go to www.choruscares.org or www.flyinghouseproductions.org.