

## November 7—14

### Today, November 7

8:45am

9:35am

9:45am

9:45am

11:00am

12:00pm

12:15pm

3:30-6pm

5:00pm

6:15pm

### Monday, November 8

9:00am

### Tuesday, November 9

9:30am

7:00pm

### Wednesday, November 10

### Thursday, November 11—Veterans Day

9:00am

6:00pm

7:30pm

### Friday, November 12

### Saturday, November 13

8:00am

### Sunday, November 14

8:45am

9-30am-1pm

9:35am

9:45am

9:45am

11:00am

12:00pm

12:15pm

5:00-7:00pm

**Communion** 32<sup>nd</sup> Sunday in Ordinary Time

**Worship**

Hospitality

Sunday School & Adult Education

Inquirers' class

**Worship**

Hospitality

Handbell Choir

Tending Adam's Garden

Mid High Youth

Senior High Youth

Sanctuary

Library

Sanctuary

Sanctuary

B'Nai Torah

Youth Room

Youth Room



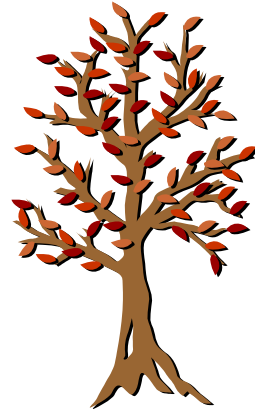
Men's Biking

Lectionary

Session

Room 14

Atrium



**Office closed**

Men's Hiking Group

Praise Team

Choir

Sanctuary

Sanctuary

Men's Breakfast

33<sup>rd</sup> Sunday in Ordinary Time

**Worship**

**Alternative Gift Fair**

Hospitality

Sunday School & Adult Education

Inquirers' Class meets with session

**Worship**

Hospitality

Handbell Choir

Mid & Senior High Joint Youth Group

Plum Delicious

Sanctuary

**Great Hall**

Library

Sanctuary

Sanctuary

Youth Room

## Weekly Announcements

November 7, 2010

### If you are visiting today, welcome!

- Please look in the Friendship Folders in the sanctuary chair racks for our visitor cards and ribbons. We invite you to wear the blue ribbon so we can get to know you, and to fill out the card and leave it in the offering plate. Please pick up a welcome bag in the narthex.

### If you attend regularly

- Please give anyone wearing a blue "Visitor" ribbon your warmest Newport welcome.

### Today at Newport

- **Friendship Table:** Please stop by today and sign cards for those in our congregation who need a greeting, a prayer, or a boost.

### Christian Education Opportunities—9:45-10:35 a.m.

Preschool Class – Room 25\*

K – 5<sup>th</sup> Grade – Room 29\*

\*Preschool and K-5 start in Room 27 for "Joyful Express" Children's Choir

Youth (Mid and Senior High) – Youth Room (lower level)

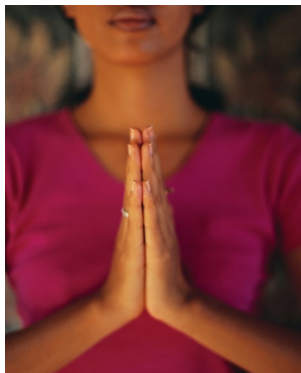
### Adults:

- **ACE:** Year One: The world into which Jesus was born with Rob McClure—November 7, 14, 21—**Today's session: *The World in One CE***
- **Parenting Faithfully**—Room 14 (every Sunday unless noted)
- **Inquirers' Class**—Library

### Upcoming Education Opportunities

### For your calendar

- Lectionary Class—Tuesdays at 9:30 a.m. in room 14
- Newport's Alternative Gift Fair—Sunday, November 14 from 9:30am to 1:00pm
- Veterans Day—November 11—office closed
- Christmas at Newport—November 28 from noon until 1:30 p.m.—meal, nativity craft and greening of the church
- Thanksgiving Eve Worship Service—November 24 at 7:00 p.m.
- First Sunday of Advent—November 28



### **Prayer Concerns and Support Opportunities**

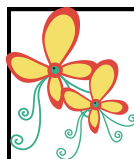
- **We have an active Prayer Chain.** If you have a concern for which you would like prayers, contact Carib Smallman, 206-588-1277, or Judy Schwab, 425-391-4167. To be listed in the printed list of prayer concerns, contact the church office, 425-746-6111.
- **Peace Candle:** The votive candle on the communion table is a prayerful reminder of those in danger in the Middle East, including our military and civilians and the people of Iraq, Afghanistan and other nations.



### **Alternative Gift Fair**

The 2010 Alternative Gifts for Christmas Fair will feature “Craft Corner,” an area where Newport members and friends can sell craft items they’ve created to raise money for a charity of their choice!

This year’s fair is on Sunday, November 14 from 9:30 a.m. to 1:00 p.m. It’s easy to participate; contact Kim Olmstead at [klolmstead2011@yahoo.com](mailto:klolmstead2011@yahoo.com) or (425) 823-7082 with the type of craft you’ll be selling and your chosen charity.



### **The Sophia Way—How you can help!**

Here are the holiday needs for assisting the homeless women: help wrap Christmas presents; collect Christmas meal food items; help with holiday shopping; deliver holiday tree/decorations; give tree gifts; seek gift certificates. Contact the Sophia Way Christmas Coordinator at [Margaret@sophiaway.org](mailto:Margaret@sophiaway.org) or call 206-226-5358.



### **WARM FOR WINTER**

At some point during the recent school year 18,000 kindergarten through high school students in Washington state experienced homelessness. However, men comprise the largest population of the homeless followed by families, women and youth. **WARM for WINTER** is a 100% volunteer project of handmade scarves and hats for the homeless in the larger Seattle area. Since 2006 members of several different faith communities have provided thousands of these items for the homeless. Newport has had an active part most of that time and we’re doing it again this year. Please bring your items to the corner box in the church narthex (next to Adult & Family Services box). We will dedicate them at both services Sunday, November 21. Contributions are tax deductible through [The Interfaith Network](http://www.theinterfaithnetwork.org). Contact Mary Hanke at [meh6308@hotmail.com](mailto:meh6308@hotmail.com) or (425) 885-9783 for information.



**Birthdays:** In the November *Newport News* there were several errors on birthdays: Steve Roselius should be 11/11 (typo), LeeAnne Knechtel 11/11 and Doris Strom 11/21. We have been in the process of converting the old database into Access and incorporating seven different columns assigned to birthdays into one. Please excuse any errors that may occur.

In order to have the most up-to-date information for the database and directory I will be asking each household to fill out a form when they are getting their pictures taken. Although information is constantly changing, we hope to be able to keep current. Thanks in advance for your cooperation.

**Please pick up:** Thanks to all who brought in a picture for our All Saints’ Day worship service. Please pick up your picture in the Atrium.

### **Thanks to our Communion servers today:**

Bob & Barbara Welsh  
Nancy Gale  
Jerry & Cathie Howard  
Mackenzie Minehan

### **Let’s walk together into our own community and make a difference**

One of our goals at Mission and Peacemaking is to make opportunities available to you to do mission work here and now with your family and friends from Newport. We carefully select who we support and always stay consistent with our Mission Statement.

Here are some causes you can support by volunteering now: *Hopelink, Bridge Ministries, Homes for Haiti, Sophia’s Way, Congregations for the Homeless* and many others. Just go to Mission on our website ([www.newportpres.org](http://www.newportpres.org)) for a complete list. Now pick one, call or email any of us on the committee and we will be happy to help you get involved. If you have a passion for a cause that you would like us to look at, let us know about it, or better yet, come to a meeting; we would love to have you join us. Questions? Contact Jerry Howard or Rob Sargent.