

Today, October 17



Monday, October 18

Tuesday, October 19

Wednesday, October 20

Thursday, October 21

Friday, October 22

Saturday, October 23

Sunday, October 24



October 17-24

| | | |
|-----------|---------------------------------------|----------------------|
| 8:45am | Worship | Sanctuary |
| 9:35am | Hospitality | |
| 9:45am | Sunday School & Adult Education | |
| 9:45am | Inquirers' class | Library |
| 11:00am | Worship | Sanctuary |
| 12:00pm | Hospitality | |
| 12:15pm | Handbell Choir | Sanctuary |
| 3:30-6:30 | Youth Group/Bridge Ministries | |
| 4:00-6:30 | Bridge Ministries | Great Hall |
| 8:30am | Men's Biking | |
| 9:30am | Lectionary | Room 14 |
| 10:30am | PW Women | Library |
| 12:30pm | Deborah Circle | Aramaki Home |
| 7:00pm | Hope Circle | Homes |
| 8:30am | Men's Hiking Group | |
| 9:30am | Brunch Bunch | Jane Wierenga's home |
| 6:00pm | Praise Team | Sanctuary |
| 7:00pm | Personnel | Library |
| 7:30pm | Choir | Sanctuary |
| | Youth Group at Sound View | |
| | Youth Group at Sound View | |
| 8:00am | Men's Breakfast | Plum Delicious |
| 9:00am | All-Church clean-up | |
| 10am-3pm | Presbytery Day at Seattle First Pres. | |
| 8:45am | Worship | Sanctuary |
| 9:35am | Hospitality | |
| 9:45am | Sunday School & Adult Education | |
| 9:45am | Inquirers' Class | Library |
| 11:00am | Worship | Sanctuary |
| 12:00pm | Hospitality | |
| 12:15pm | Handbell Choir | Sanctuary |

OFFICE HOURS

The office will be open Monday through Thursday from 9:00 a.m. to 4:00 p.m. and Friday from 9:30 a.m. to 12:30 p.m.

For information on any church activities, events or committees, call the office, 425-746-6111, or email us at office@newportpres.org or visit our website, www.newportpres.org

Weekly Announcements

October 17, 2010

If you are visiting today, welcome!

- Please look in the Friendship Folders in the sanctuary chair racks for our visitor cards and ribbons. We invite you to wear the blue ribbon so we can get to know you, and to fill out the card and leave it in the offering plate. Please pick up a welcome bag in the narthex.

If you attend regularly

- Please give anyone wearing a blue "Visitor" ribbon your warmest Newport welcome.

Today at Newport

- **Friendship Table:** Please stop by today and sign cards for those in our congregation who need a greeting, a prayer, or a boost.

Christian Education Opportunities—9:45-10:35 a.m.

Preschool Class – Room 25*

K – 5th Grade – Room 29*

*Preschool and K-5 start in Room 27 for "Joyful Express" Children's Choir

Youth (Mid and Senior High) – Youth Room (lower level)

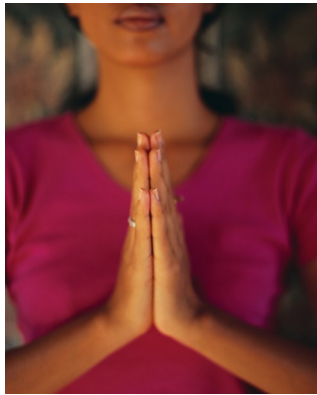
Adults:

ACE: Politics and Society and the Young with David Domke in the Great Hall

Parenting Faithfully—Room 14 (every Sunday unless noted)

Upcoming Education Opportunities

- Religious Violence in all Faiths with Eugene Webb—October 24, 31
- Year One: The world into which Jesus was born with Rob McClure—November 7, 14, 21
- Faith Stories led by Jim Patten—November 28 through December 19 (Advent)



Prayer Concerns and Support Opportunities

- **We have an active Prayer Chain.** If you have a concern for which you would like prayers, contact Carib Smallman, 206-588-1277, or Judy Schwab, 425-391-4167. To be listed in the printed list of prayer concerns, contact the church office, 425-746-6111.
- **Peace Candle:** The votive candle on the communion table is a prayerful reminder of those in danger in the Middle East, including our military and civilians and the people of Iraq, Afghanistan and other nations.

Alternative Gift Fair

Crafters join in! Do you have a craft hobby? Would you like to use that hobby to help others? The 2010 Alternative Gifts for Christmas Fair will feature "Craft Corner," an area where Newport members and friends can sell craft items they've created to raise money for a charity of their choice! This year's fair is on Sunday, November 14 from 9:30 a.m. to 1:00 p.m. It's easy to participate; contact Kim Olmstead at klolmstead2011@yahoo.com or (425) 823-7082 with the type of craft you'll be selling and your chosen charity.

"Presbyfest" is happening on Saturday, October 23 from 9:00 – 3:00 at Seattle First Presbyterian Church. Check out this free event, sponsored by Seattle Presbytery, by going to their web-site: www.seattlepresbytery.org A great variety of workshops will be offered, along with a delicious lunch prepared by Dennis Hughes and Scott Lumsden, our stated clerk and executive presbyter.

Pictorial Directory: Be sure to stop in the narthex today to sign up for your photo for the new directory. The earlier you have your pictures taken the sooner you will get them back. Along with one free 8 x 10 photo and directory, you will have an opportunity to purchase pictures.

Chancel Arts: The Worship Committee is seeking to expand Newport's Chancel Arts Committee and is looking for those with creative thoughts and energy to share. The group's goal is to brainstorm and implement displays of visual art that contribute to our multi-sensory worship of God. These displays will be placed in Newport's sanctuary as they lend focus on the church's liturgical season. If interested, please contact Heather McClure-Coleman at (425) 255-8582 or hkmc1@comcast.net.

Fall Work Party Saturday, October 23 9:00 a.m.—noon



Our fall work party next Saturday will have tasks for all interest and skill levels. Windows need washing, inside and out. Pew chairs need dusting. Flower beds need weeding. Ivy and blackberries need to be hacked back (wear thick gloves!). Trees need pruning under the expert eyes of John Grove and Jean Wang. John will have his chipper on site to convert dead branches into useful mulch for the beds. Plan to bring appropriate tools—wheelbarrows, shovels and tall pruning hooks will be very useful. Jeff Jacobs will be coordinating the work. **All are welcome!**

All Saints Day

On Sunday, October 31 we will remember during our worship services, the saints in our lives, both past and present, with a pictorial display. You are invited and encouraged to bring a picture of those who have made a difference in your lives. It will be helpful if you bring those pictures the week before (next Sunday). Please drop off pictures (no larger than 5x7) in the basket at the welcome center or at the church office. Please label the photo, visibly, with a name and perhaps a few words about the person. Thank you!

Inquirers' Class

Twice a year we offer an Inquirers class for those wanting to inquire about membership at Newport. The class will explore what it means to be a member of a Presbyterian Church in general and Newport in particular. There is no obligation to join the church should you decide to come to our class. We will meet four times: October 17, 24, 31 and November 7. Those who would decide to join the church will meet one more time on November 14 with the Session of this church. If you missed today's class but would like to attend, please join us next Sunday at 9:45 a.m. in the library.

Please RSVP to (425) 746-6111 or email office@newportpres.org. For those with children, nursery care and Sunday School classes are available during this time.

Questions? Please contact Jim or Janet.