

Weekly Announcements

July 25, 2010

If you are visiting today, welcome!

- Please look in the Friendship Folders at the welcome desk in the Narthex for our visitor cards and ribbons. We invite you to wear the blue ribbon so we can get to know you, and to fill out the card and leave it in the offering plate. Please pick up a welcome bag in the narthex.

If you attend regularly

- Please give anyone wearing a blue "Visitor" ribbon your warmest Newport welcome.

Today at Newport

- **Friendship Counter:** Please stop by today and sign cards for those in our congregation who need a greeting, a prayer, or a boost.



Flowers in Sanctuary

The flowers in the sanctuary today are from Doris Strom
in memory of her husband,

Karl Strom

October 20, 1926 July 26, 2009

Thank you to our ushers today:

*Penny & John Grove
Patti & Paul Boys*

Next week's ushers

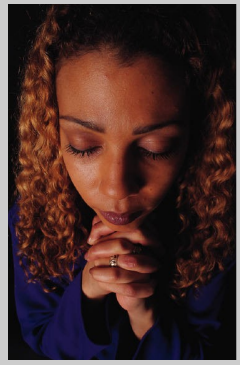
*Ken & Ginny Crowder
Jim & Diane Cooley*



Labor Day Retreat

It's time to make your plans for the Labor Day Retreat, September 4-6. Fill out the registration form in July's *Newport News* and turn it into the office or place in the collection basket. For only \$73 you can enjoy three days of fellowship, fun, campfires, beach walks, sand castles, oyster outings, kite flying and more! There will be a potluck dinner Saturday evening and Sunday morning worship on the beach followed by

Fred Antrobus' famous homemade cinnamon rolls. (They're probably worth \$73 alone!) The information and form will be published again in the August newsletter and the deadline is August 25. Don't delay!



Prayer Concerns and Support Opportunities

- **We have an active Prayer Chain.** If you have a concern for which you would like prayers, contact Carib Smallman, 206-588-1277, or Judy Schwab, 425-391-4167. To be listed in the printed list of prayer concerns, contact the church office, 425-746-6111.
- **Peace Candle:** The votive candle on the communion table is a prayerful reminder of those in danger in the Middle East, including our military and civilians and the people of Iraq, Afghanistan and other nations.

Summer Ministries Continued...

- **Congregations for the Homeless—meals for August.** Sign up in the narthex.
- **Books for children ages infant through teenager** are still being collected for Hopelink’s Summer Reading Program. Look for the box in the collection area.
- **Treehouse** is accepting back-to-school donations. Put your purchases in the donation bin in the narthex.



Summer Fun at VCS

Check out the bulletin board in the narthex for the pictures taken at this summer’s VCS. There are pictures of the kids playing games, making crafts, and one of the best things, eating snacks! It looks like the “big” kids had fun too. A great time was by all.



**Don’t Miss this Opportunity!
50th Anniversary DVDs Available**

Due to the overwhelming demand for the 50th anniversary program DVD, Dick Hawes has produced more so no one need wait for a copy. Apparently the “Pastors Musical Skit” was so popular that the DVD is the top-selling DVD in Newport’s history. Copies are on sale today for only \$8.00. Own a part of this hysterical event. Proceeds from the sale of the DVDs (after expenses) will be placed in the Sound System Account for future recording needs.



July 25—August 1

Today, July 25	10:00am	Worship	Sanctuary
	11:00am	Hospitality	
Monday, July 26	8:30am	Men’s Biking	
	10:00am	Newsletter Crew	Library
Tuesday, July 27			
Wednesday, July 28			
Thursday, July 29	8:30am	Men’s Hiking Group	
Friday, July 30			
Saturday, July 31	8:00am	Men’s Breakfast	Plum Delicious
Sunday, August 1	10:00am	Worship/Communion	Sanctuary
	11:00am	Hospitality	



Newport Presbyterian Church
4010 120th Avenue SE
Bellevue, WA 98006-1199
for secure mail use:
P.O. Box 53385
Bellevue, WA 98015-3385

Phone: (425) 746-6111
Fax: (425) 746-6153
E-Mail: office@newportpres.org
Website: www.newportpres.org
Office Hours: 9:00-4:00 M-Th
9:30-1:00 F

Pastor: **Jim Patten**
Associate Pastor: **Janet DeWater**
Pastors Emeriti: **David Meekhof, Gary Schwab**
Parish Associate: **Mary Hanke**
FISHPOND Preschool Director: **Keri Cable**
Music Director: **Rhonda Juliano**
Pianist: **Lori Surrency**
Organist: **Robert Dalton**
Office Manager: **Pam Zipoy**
Bookkeeper: **Susan Jorgensen**
Nursery Director: **Noriko Fujita**

OFFICE HOURS

The office will be open Monday through Thursday from 9:00 a.m. to 4:00 p.m. and Friday from 9:30 a.m. to 12:30 p.m.

For information on any church activities, events or committees, call the office, 425-746-6111, or email us at office@newportpres.org or visit our website, www.newportpres.org

See usher for large-print bulletin