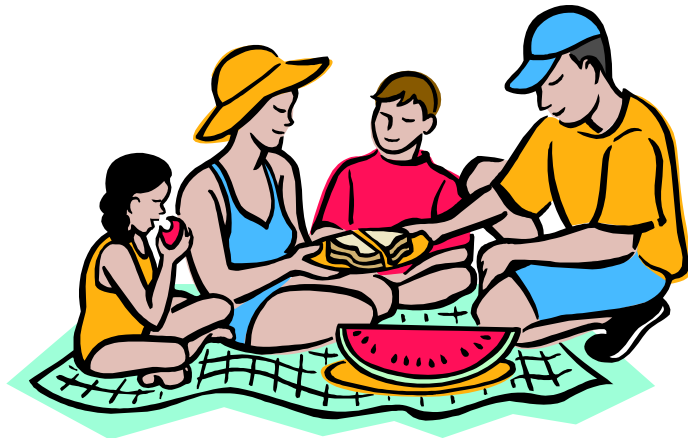


July 4—11

Today, July 4	10:00am Worship/Communion 11:00am Hospitality	Sanctuary
Monday, July 5	Office closed for holiday	
Tuesday, July 6	8:30am Men's Biking 7:00pm Property Committee 7:00pm Personnel	Library Chapel
Wednesday, July 7	7:00pm Stewardship & Finance	Library
Thursday, July 8	8:30am Men's Hiking Group 9:30am Brunch Bunch	Homes
Friday, July 9		
Saturday, July 10	8:00am Men's Breakfast	Plum Delicious
Sunday, July 11	10:00am Worship/Communion 11:00am Hospitality	Sanctuary



OFFICE

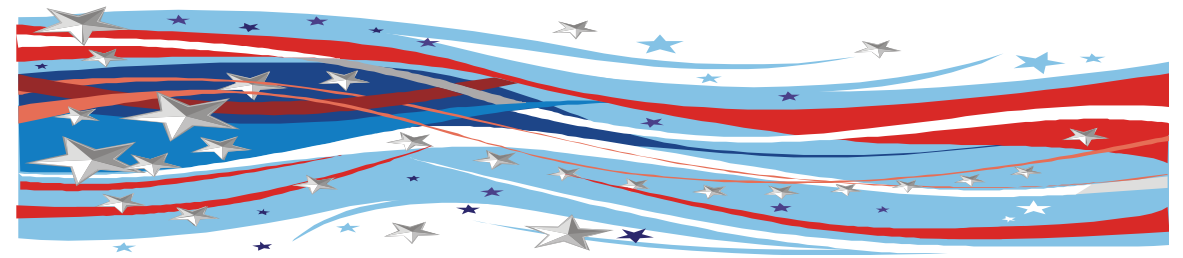
The office will be open Monday through Thursday from 9:00 a.m. to 4:00 p.m. and Friday from 9:30 a.m. to 12:30 p.m.

HOURS

For information on any church activities, events or committees, call the office, 425-746-6111, or email us at office@newportpres.org or visit our website, www.newportpres.org

Weekly Announcements

July 4, 2010



If you are visiting today, welcome!

- Please look in the Friendship Folders at the welcome desk in the Narthex for our visitor cards and ribbons. We invite you to wear the blue ribbon so we can get to know you, and to fill out the card and leave it in the offering plate. Please pick up a welcome bag in the narthex.

If you attend regularly

- Please give anyone wearing a blue "Visitor" ribbon your warmest Newport welcome.

Today at Newport

- **Friendship Counter:** Please stop by today and sign cards for those in our congregation who need a greeting, a prayer, or a boost.

Thank you to the following Communion Assistants today:

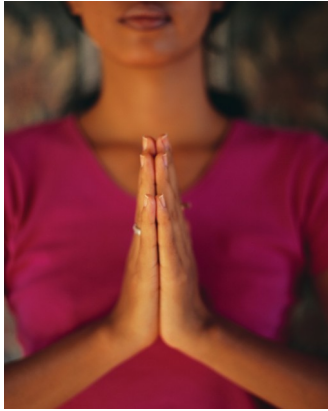
Frances Peppard, Wally Alder, Roy Gustafson,
MaryAnn Eschbach, Chuck Ask, Leada Ask

Thank you to our ushers today:

Bruce & Neoma Lawrenson; Bob & Linda Vaughn

Next week's ushers:

Barbara & Bob Welsh
Tony Copes & Trish Rogers



Prayer Concerns and Support Opportunities

- **We have an active Prayer Chain.** If you have a concern for which you would like prayers, contact Carib Smallman, 206-588-1277, or Judy Schwab, 425-391-4167. To be listed in the printed list of prayer concerns, contact the church office, 425-746-6111.
- **Peace Candle:** The votive candle on the communion table is a prayerful reminder of those in danger in the Middle East, including our military and civilians and the people of Iraq, Afghanistan and other nations.

Summer Ministries—you can help!

- **Congregations for the Homeless— meals for August.** Sign up in the narthex.
- **Bring children’s books for children ages infant through teens to support Hopelink’s Summer Reading Program.** Look for the brightly colored box throughout the summer in the Collection area.
- **Support Eastside Baby Corner by donating new and gently-used items for infants, expectant mothers and children under the age of 12.** Place your donations in the playpen in the narthex.
- **September is just around the corner and Treehouse is getting ready for back-to-school shopping.** Place your purchases in the Treehouse donation bin by August 1. Questions? Contact Ann Huber at (425) 985-3653.

NEW!

Bath House Cottage at Sound View Camp

Work is continuing on the Bath House Cottage at Sound View Camp. The cottage was partially constructed as part of NPC’s 50th anniversary celebration. On Saturday, June 27th, a new window was added to brighten things up, three doors were installed, and some wiring was completed. The next work day will be July 31st beginning at 8:30. If you are handy with tools and want to help, contact Will Winslow at will-winslow@comcast.net.



A new directory is available for pick-up in the narthex. Please take one per family until more can be run off. We are still in the process of updating the directory so our pictorial directory in the fall will have the most up-to-date information. I have been calling and emailing people but if you see anything that needs correction please give me a call or email the information.

For college students or young adults who use your address, it would be nice to have their email address and cell phone number. We could email them the newsletter to keep them informed of Newport’s activities!



Ladies—save this date!

Be sure to save Thursday, August 19 to attend the Women’s Summer Dessert at Newport. It’s a good time for women new to our church to learn about Presbyterian Women and enjoy fellowship over dessert, sign up for circles and hear an introduction to the 2010-2011 study on Revelation. The Thank Offering will be explained and received. All women are encouraged to come.

PLEASE NOTE CHANGE

Due to a scheduling conflict with Tent City 4, Newport’s participation in hosting a dinner has been canceled. Watch for further information.