

# Welcome to Newport Presbyterian Church

*Welcoming in Spirit; Progressive in Theology*

June 6, 2010

**SUMMER SCHEDULE: WORSHIP AT 10:00**

## Welcome to Newport Presbyterian

### If you are visiting today, welcome!

- Please look in the Friendship Folders at the welcome desk in the Narthex for our visitor cards and ribbons. We invite you to wear the blue ribbon so we can get to know you, and to fill out the card and leave it in the offering plate. Please pick up a welcome bag in the narthex.

### If you attend regularly

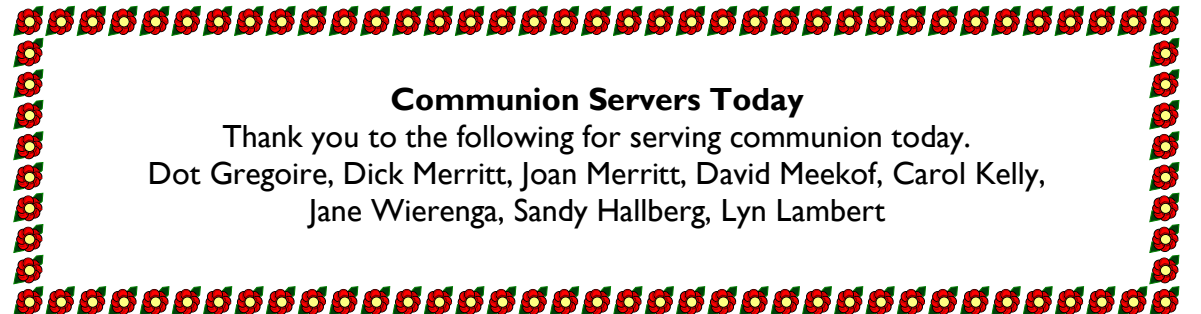
- Please give anyone wearing a blue “Visitor” ribbon your warmest Newport welcome.

### Today at Newport

- **Friendship Counter:** Please stop by today and sign cards for those in our congregation who need a greeting, a prayer, or a boost.

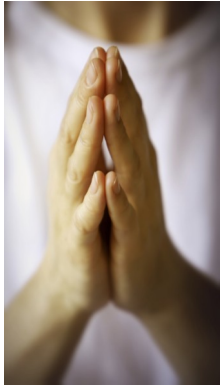
### Adults

- **Lectionary Class:** We will meet on June 8 and 15 at 9:30 a.m. in room 14 and then will conclude for the summer.



### **Communion Servers Today**

Thank you to the following for serving communion today.  
Dot Gregoire, Dick Merritt, Joan Merritt, David Meekof, Carol Kelly,  
Jane Wierenga, Sandy Hallberg, Lyn Lambert



### **Prayer Concerns and Support Opportunities**

- **We have an active Prayer Chain.** If you have a concern for which you would like prayers, contact Carib Smallman, 206-588-1277, or Judy Schwab, 425-391-4167. To be listed in the printed list of prayer concerns, contact the church office, 425-746-6111.
- **Peace Candle:** The votive candle on the communion table is a prayerful reminder of those in danger in the Middle East, including our military and civilians and the people of Iraq, Afghanistan and other nations.



### **Congregations for the Homeless**

Newport will again be a support congregation for the Congregations for the Homeless program. We will supply all the breakfast supplies for the 25 to 30 men who will be staying at Overlake Presbyterian Church during the month of August. Sign-up charts are on one of the rolling bulletin boards; everyone's help is needed! Details will be on the bulletin board and in the newsletter.



### **Benefit Breakfast for Haiti**

Be sure to join us at 9:00 a.m. on Sunday, June 20 (Father's Day) for the Pancake Breakfast to benefit Haiti. Come for pancakes with the works! We will be "auctioning" off extra special toppings! Proceeds will be shared evenly with Heifer International and Presbytery Disaster Assistance, both earmarked specifically for Haiti. Sign-ups begin after Memorial Day. No breakfast in bed for Dad—bring him for pancakes!

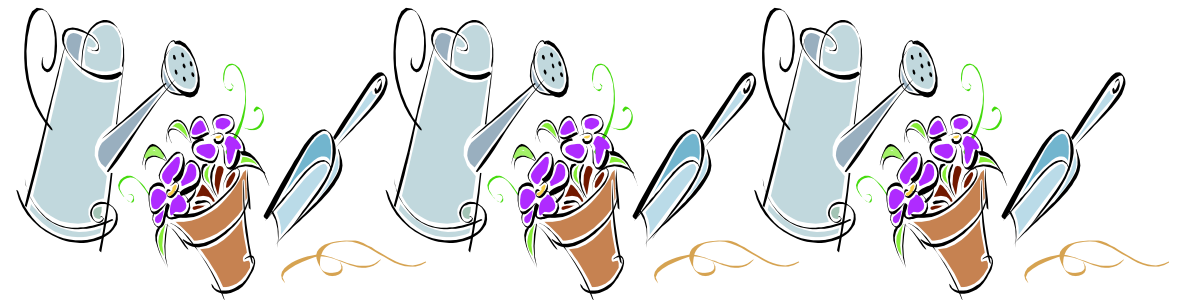
### **Music News**

**End-of-the-year barbeque** at Rhonda's for choir members, praise team members, handbell members and salad bowl "crewtons" on Thursday, June 17 at 6:00 p.m. Pick up a flyer in the music room for details.

**Choir Retreat:** Save the date of September 11-12 for our retreat at Rainbow Lodge Center in North Bend. Chancel choir members and their partners are encouraged to attend. Would you like to join the choir? This is a great opportunity to see what we're all about. Pick up a flyer at the visitor's information table or in the music room.

### **June 6-13**

|                          |                |                                    |                  |
|--------------------------|----------------|------------------------------------|------------------|
| <b>Today, June 6</b>     | <b>10:00am</b> | <b>Worship/Communion</b>           | <b>Sanctuary</b> |
|                          |                | <b>50<sup>th</sup> Anniversary</b> |                  |
|                          | 11:00am        | Hospitality                        |                  |
|                          | 11:15am        | Dep Info meeting for parents       | Chapel           |
|                          | 4:00-7:00pm    | Senior High BBQ                    | Huber's Home     |
| <b>Monday, June 7</b>    | 8:30am         | Men's Biking                       |                  |
|                          | 10:00am        | Ruth Circle                        | Library          |
| <b>Tuesday, June 8</b>   | 9:30am         | Lectionary                         | Room 14          |
|                          | 10:30am        | Stephen Ministry                   | Room 14          |
| <b>Wednesday, June 9</b> | 7:00pm         | Stewardship & Finance              | Library          |
| <b>Thursday, June 10</b> | 8:30am         | Men's Hiking Group                 |                  |
|                          | 9:30am         | Brunch Bunch                       | Homes            |
|                          | 6:00pm         |                                    |                  |
| <b>Friday, June 11</b>   | 8:00am         | Men's Breakfast                    | Plum Delicious   |
| <b>Saturday, June 12</b> | <b>10:00am</b> | <b>Worship</b>                     | <b>Sanctuary</b> |
| <b>Sunday, June 13</b>   | 11:00am        | Hospitality                        |                  |
|                          | 11:15am        | Healing Service                    | Chapel           |



### **OFFICE HOURS**

The office will be open Monday through Thursday from 9:00 a.m. to 4:00 p.m. and Friday from 9:30 a.m. to 12:30 p.m.

For information on any church activities, events or committees:

Call the office at (425) 746-6111

E-mail us at [office@newportpres.org](mailto:office@newportpres.org)

Visit our website at [www.newportpres.org](http://www.newportpres.org)