

April 18-25

Today, April 18	10:00am	Worship	Sanctuary
	11:00am	Hospitality	Atrium
Monday, April 19	9:00am	Men's Biking	
Tuesday, April 20	11:00am	AIDS Care	Library
	12:30pm	Deborah Circle	Aramaki's Home
Wednesday, April 21	7:00pm	Hope Circle	Yang's Home
Thursday, April 22	9:00am	Men's Hiking Group	
	9:30am	Brunch Bunch	Homes
	6:00pm	Praise Team	Sanctuary
	7:30pm	Choir	Sanctuary
Friday, April 23			
Saturday, April 24	8:00am	Men's Breakfast	Plum Delicious
Sunday, April 25	8:45am	Informal Worship	Sanctuary
		Bread for World Letter Writing	
	9:35am	Hospitality Time	Atrium
	10:35am	Hospitality Time	
	11:00am	Traditional Worship	Sanctuary
		Bread for World Letter Writing	
	12:00pm	Hospitality Time	
	12:15pm	Handbell Choir	Great Hall
	5:00pm	Mid High Youth	Youth Room
	6:30pm	Senior High	Youth Room



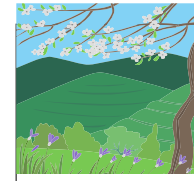
Upcoming Events:

- Eastside Interfaith Fair—Saturday, May 1
- Women's Retreat at Rainbow Lodge—May 7, 8
- 50th Anniversary Celebration Dinner and Program—Saturday, June 5

OFFICE HOURS

The office will be open Monday through Thursday from 9:00 a.m. to 4:00 p.m. and Friday from 9:30 a.m. to 12:30 p.m.

For information on any church activities, events or committees, call the office, 425-746-6111, or email us at office@newportpres.org or visit our website, www.newportpres.org



Welcome to Newport Presbyterian Church

Welcoming in Spirit; Progressive in Theology

April 18, 2010

If you are visiting today, welcome!

- Please look in the Friendship Folders at the welcome desk in the Narthex for our visitor cards and ribbons. We invite you to wear the blue ribbon so we can get to know you, and to fill out the card and leave it in the offering plate. Please pick up a welcome bag in the narthex.

If you attend regularly

- Please give anyone wearing a blue "Visitor" ribbon your warmest Newport welcome.

Today at Newport

- **Friendship Counter:** Please stop by today and sign cards for those in our congregation who need a greeting, a prayer, or a boost.
- **Parenting Faithfully** will not meet today. We will meet again on April 25.
- **Sound View Work Weekend:** Over the course of this weekend, over 60 folks, along with the two pastors, will have contributed to Newport's 50th Anniversary Mission Project at Sound View Presbyterian Camp in Longbranch, WA. They are constructing a new cabin, updating another, splitting wood, clearing rocks from the horse corral, cleaning life jackets and providing other clean-up. Thank you for your prayers of support and safe travel!

Next Sunday, April 25: We will return to two services at 8:45 and 11:00 a.m. Sunday School will meet and the new adult class "Using Environmental Lenses to Read Scripture" with Dr. Loretta Jancoski will meet in the Chapel. Parenting Faithfully will meet in room 14.

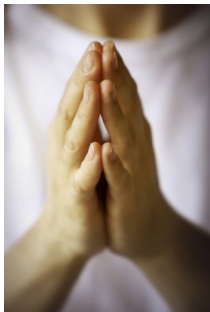
ACE continued:

Dr. Loretta Jancoski will be teaching the other two units on May 2 (God and Jesus in an Evolutionary World) and May 9 (Theological Update for Environmental Christians) in the Chapel. Be sure to attend this fascinating class!



50th Anniversary Celebration

Mark your calendars: On Saturday, June 5th, we will culminate our 50th anniversary year celebration with a catered dinner and program. Details will be coming. This will be a fun event for the whole family.



Prayer Concerns and Support Opportunities

- **We have an active Prayer Chain.** If you have a concern for which you would like prayers, contact Carib Smallman, 206-588-1277, or Judy Schwab, 425-391-4167. To be listed in the printed list of prayer concerns, contact the church office, 425-746-6111.
- **Peace Candle:** The votive candle on the communion table is a prayerful reminder of those in danger in the Middle East, including our military and civilians and the people of Iraq, Afghanistan and other nations.

Used Durable Medical Equipment Needed

Bridge Disability Ministries in Bellevue has been a mission partner of Newport for many years and has a continuing need for used wheelchairs, walkers, transfer benches, etc, for recycling and passing on to those who can't afford them. If you have any of these items no longer in use or would be interested in helping in their recycling facility, contact Bridge at (425) 885-1006, or Jack Roos at (425) 454-9846.



50th Anniversary Year
Samaritan Center of Puget Sound
 (formerly Presbyterian Counseling Service)

You're invited to the
Samaritan Fundraising Luncheon
 Wednesday, May 5—11:45 a.m. to 1:30 p.m.
 Bellevue Hilton ~ 300 112th Ave SE

Cost: \$40 (this covers event costs and is not a donation)

The keynote speaker will be David Domke, Chair of the UW Department of Communication. His topic is "The Hope Covenant."

"One of the most profoundly human sentiments is a yearning for hope," says David Domke. "To have hope is to believe that good things are coming and that one's trajectory in life is leading toward positive outcomes. Hope stirs people to do things they never imagined. Hope gets people out of bed on difficult mornings. Hope compels people to cross dividing lines and overcome fears and prejudices. What have we done today to offer a sense of hope—both to ourselves and others? It is time to reflect upon and renew our commitments and to take steps anew to do the 'somethings' we can do."

Reservations must be made by **April 28** by contacting Leah Buck at (206) 527-2266 ext. 116 or lbuck@samaritanps.org



Bellevue Crop Hunger Walk

Communities Responding to Overcome Poverty

Sunday, May 2, 2010 Registration: 12:30 p.m. Walk: 1:00 p.m.

The Walk will begin and end at Bellevue First Congregational Church located at the corner of NE 8th and 108th Ave NE. The goal for 2010 is 400+ walkers raising \$25,000 for local and world-wide hunger relief. (HopeLink and the Emergency Feeding Program will receive 25% of the monies raised.)

For more information contact Kim Iverson at (206)280-9636 or email kim@geocomputer.com.

Eastside Interfaith Fair

Don't miss the Seventh Annual Eastside Interfaith Fair on Saturday, May 1 from 10:00 a.m. to 4:00 p.m. at Unity of Bellevue, 16330 NE 4th, Bellevue.

Gain insight and understanding around the theme "Peace for Our Time; by listening and sharing we learn". Engage in conversation with people on many spiritual paths; enjoy distinguished speakers, panel discussions, musical entertainment; visit information tables and walk an outdoor labyrinth. Lunch is available for \$5.

Keynote speaker is Ann Holmes Redding, noted Christian/Muslim teacher and scholar; our Gary Skinner will represent Christianity in a panel discussion with representatives of Buddhism, Hinduism, Judaism and Islam. Michael Ramos, Director of the Church Council of Greater Seattle, will moderate the panel. The event is free; parking free too.

For more information contact Trish Rogers, Lyn Lambert or www.interfaithfair.org



All we need is ... peace, love and a home

You're invited to
Mary's Place Spring Benefit Luncheon
 Tuesday, May 4 ~ 12:00 to 1:00 p.m.
 Rainier Room at the Seattle Center

Lunch will be provided.
 Please RSVP by April 21 to (206) 621-8474 or staff@churchofmarymagdalene.org.