

April 10-17		
Today, April 10	<i>Fifth Sunday in Lent</i>	
8:45am	Worship	Sanctuary
9:35am	Hospitality	
9:45am	Sunday School and Education Hour	
11:00am	Worship	Sanctuary
12:00pm	Hospitality	
2:00pm	Return from Sound View	
Monday, April 11		
9:00am	Men's Biking	Library
Tuesday, April 12		
9:30am	PW Board	Library
7:00pm	Session	Chapel
Wednesday, April 13		
7:00pm	Taizé/Communion	Sanctuary
Thursday, April 14		
9:00am	Men's Hiking Group	
9:30	Brunch Bunch	Home of Jan Medley
6:00pm	Praise Team	Sanctuary
7:30pm	Choir	Sanctuary
Friday, April 15		
Saturday, April 16		
8:00am	Men's Breakfast	
8:30-noon	All Church Clean-up	Plum Delicious
Sunday, April 17	<i>Palm Sunday</i>	
8:45am	Worship	Sanctuary
9:35am	Hospitality	
9:45am	Sunday School and Education Hour	
11:00am	Worship	Sanctuary
12:00pm	Hospitality	
12:15pm	Handbells	Sanctuary
5:30-7:30pm	Senior & Mid High Youth	Youth Room

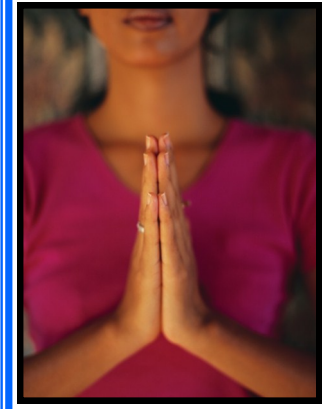


OFFICE HOURS

The office will be open Monday through Thursday from 9:00 a.m. to 4:00 p.m. and Friday from 9:30 a.m. to 12:30 p.m.

For information on any church activities, events or committees, call the office, 425-746-6111, or email us at office@newportpres.org or visit our website, www.newportpres.org

Weekly Announcements
April 10, 2011

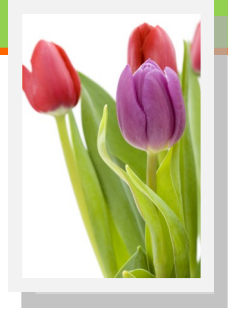
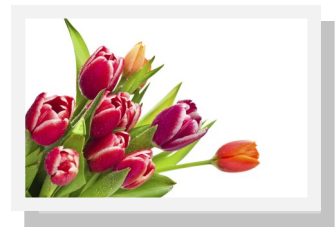
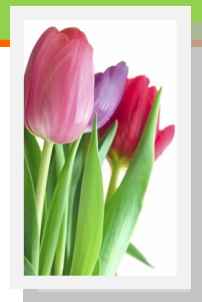


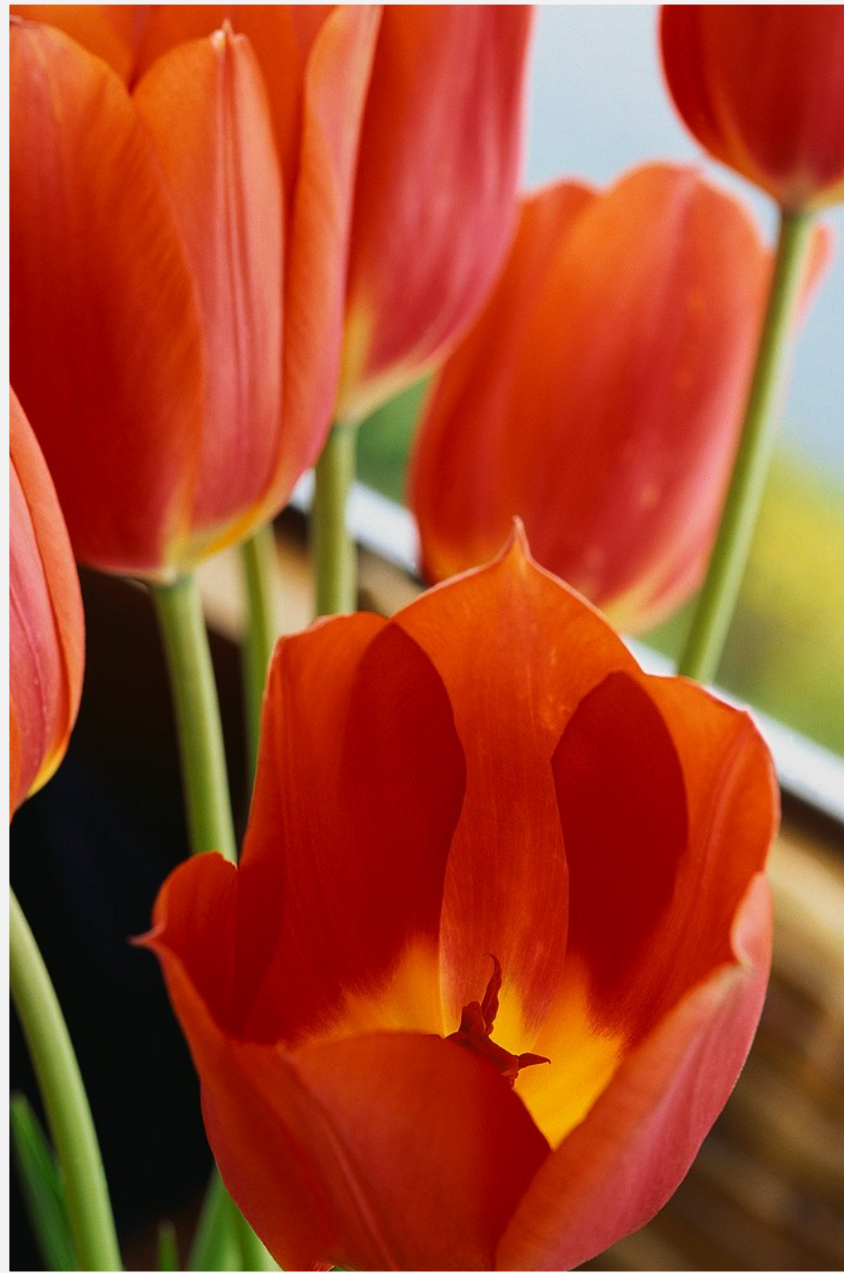
Prayer Concerns and Support Opportunities

- We have an active Prayer Chain.** If you have a concern for which you would like prayers, contact Carib Smallman (206) 588-1277 or Judy Schwab (425) 391-4167. To be listed in the printed list of prayer concerns, contact the church office at (425) 746-6111.
- Peace Candle:** The votive candle on the communion table is a prayerful reminder of those in danger in the Middle East, including our military and civilians and the people of Iraq, Afghanistan and other nations.



- April 17—Adult Education Class on asking the tough questions near the end of life led by Holly Hallman-Dunlap
- April 21—Good Friday Worship service at 7:00 p.m.





RAIN OR SHINE OR RAIN

Please include Newport's annual spring work party in your plans for next Saturday, April 16 from 8:30 a.m. to noon. This is the opportunity to get the church spruced up for Easter. Some of the "chores" include window washing, weeding, pruning, etc.



KITCHEN CLEAN-UP

Newport's own "Kitchen Crew" has cleaned up the clutter in our kitchen, and you are welcome to claim the superfluous surplus, now on a table in the **Great Hall**. Any items remaining will be donated to charities. Please come and have a look-see, and take your pie plate (or whatever) home.



Please check the **LOST AND FOUND** items on the table in the narthex.

There may be something that belongs to **You!**

PRESBYTERIAN WOMEN

The Annual Gathering of the Presbyterian Women in the Synod of Alaska Northwest will be May 5-7 at Camp Berachah in Auburn. There are a variety of options for lodging or for commuter packages. An impressive slate of speakers, programs and displays will be offered. **The deadline for registration is April 14 (this week)**. Please see or call Cindi Rezabek for a copy of the information sheet and registration form. Forms will also be available at the Newport Women's Retreat registration table. All women are encouraged to attend.

ITEMS TO CHECK OFF YOUR TO-DO LIST:

- Turn in your VCS registration form
- Turn in your Easter flower form