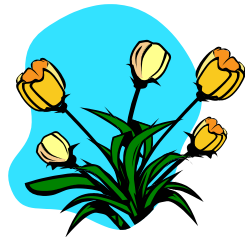


March 20-27



Today, March 20

8:45am
9:35am
9:45am

Second Sunday in Lent

Worship
Hospitality
Sunday School and Education Hour

Sanctuary

11:00am
12:00pm
5:30-7:30pm

Worship
Hospitality
Senior & Mid High Youth

Sanctuary

Youth Room

Monday, March 21

9:00am

Men's Biking
Library

Tuesday, March 22

10:00am
7:00pm
7:00pm

PW Women's Retreat Committee
Mission & Peacemaking
Christian Education

Library
Chapel
Room 22

Wednesday, March 23

7:00pm

Taizé

Sanctuary

Thursday, March 24

9:00am
9:30am
6:00pm
7:30pm

Brunch Bunch
Praise Team
Choir



Men's Hiking Group
Home of Jane Wierenga
Sanctuary
Sanctuary

Friday, March 25

Saturday, March 26

8:00am
6:00pm

Men's Breakfast
New 40s & 50s Fellowship Group
Third Sunday in Lent

Plum Delicious
Great Hall

Sunday, March 27

8:45am
9:35am
9:45am
10:30am-5:00pm
11:00am
12:00pm
12:15pm
5:30-7:30pm

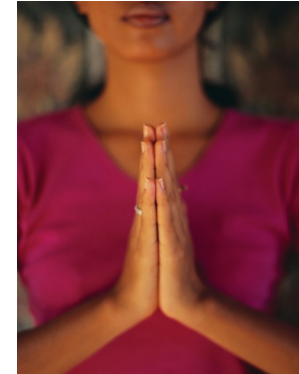
Worship
Hospitality
Sunday School and Education Hour
Youth Lazy Sunday
Worship
Hospitality
Handbells
Senior & Mid High Youth

Sanctuary
Sanctuary
Sanctuary
Youth Room



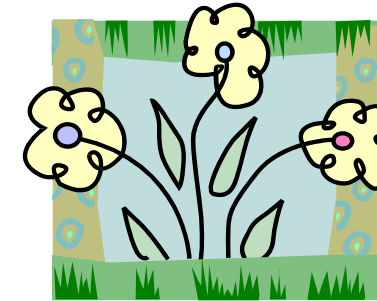
Weekly Announcements

March 20, 2011



Prayer Concerns and Support Opportunities

- **We have an active Prayer Chain.** If you have a concern for which you would like prayers, contact Carib Smallman (206) 588-1277 or Judy Schwab (425) 391-4167. To be listed in the printed list of prayer concerns, contact the church office at (425) 746-6111.
- **Peace Candle:** The votive candle on the communion table is a prayerful reminder of those in danger in the Middle East, including our military and civilians and the people of Iraq, Afghanistan and other nations.



Presbyterian Disaster Assistance—Japan Earthquake and Tsunami

Those who wish to contribute to our denomination's disaster relief in Japan may do so through the Presbyterian Disaster Assistance Fund. This designated account supplements the One Great Hour of Sharing (OGHS) offering to enable a significant response for relief and disasters in Japan. Your faithful giving is deeply appreciated. To make a gift by check, please note #DR000117 on the memo line of your check and mail it to:

Presbyterian Church (U.S.A.)
PO Box 643700
Pittsburgh PA 15264-3700

Playreading

You are invited to join the Playreaders on Saturday, March 26 at 7:00 p.m. at the home of Jack and Sharon Roos to read Alan Ayckbourn's comedy "Absurd Person Singular." Joan Merritt will be the director and would like to know if you are coming as a reader. Newcomers and non-readers are always welcome. Please respond to Jack and Sharon at (425) 454-9846 or Joan at (425) 746-5416.



Taizé Services

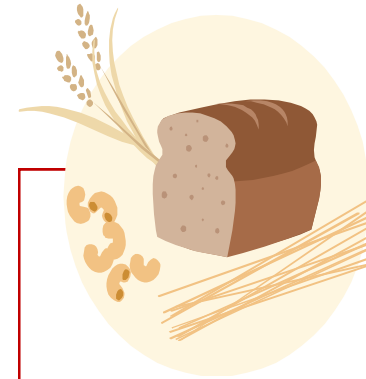
Please join us on Wednesday evenings March 23, 30, April 6 and 13 at 7:00 p.m. for these contemplative services of music, readings and silence.

All Church Mission Retreat

Fill out your registration form in the Atrium after services today for Newport's retreat at Sound View camp on Saturday, April 9 and 10. Join us for fun, fellowship and food in these beautiful surroundings.

New Newport Group!

For those folks in their 40s and 50s (and you know who you are), we're planning our first get-together on Saturday, March 26 at 6:00 p.m. in the Great Hall. It will be a potluck with a Peruvian theme so pull out your alpaca wool sweater to wear and find some fun recipe to share. (Not too spicy—heartburn you know!) Email Janet at janetdewater@newportpres.org and join us for dinner and table games.



Bread for the World

Last year Newport Presbyterian Church participated in Bread for the World's Offering of Letters to urge Congressional action on national food problems. This year Bread for the World turns its attention to global issues.

This year the campaign has four objectives:

- ◆ A stronger U.S. government focus on reducing poverty
- ◆ Clearer accountability for how aid dollars are spent and their results
- ◆ A transformed U.S. development agency
- ◆ U.S. aid that meets the needs and wants of local people

A few minutes of your time after church spent watching a short CD presentation followed by writing letters to your federal legislators will help to end hunger around the world. See you in the atrium on Sunday, March 27th after each service.

OFFICE HOURS

The office will be open Monday through Thursday from 9:00 a.m. to 4:00 p.m. and Friday from 9:30 a.m. to 12:30 p.m.

For information on any church activities, events or committees, call the office, 425-746-6111, or email us at office@newportpres.org or visit our website, www.newportpres.org