

## February 6—13

**Today, February 6**  
**Souper Bowl Sunday**

*Fifth Sunday in Ordinary Time*

8:45am  
9:35am  
9:45am  
9:45-12:15  
11:00am  
12:00pm

**Worship**  
Hospitality  
Sunday School and Education Hour  
Youth Group/**Souper Bowl**  
**Worship**  
Hospitality

Sanctuary

Youth Room  
Sanctuary

**Monday, February 7**

9:00am  
10:00am

Men's Biking  
Ruth Circle

Library

**Tuesday, February 8**

10:30am  
7:00pm

PW Board  
Session

Library  
Chapel

**Wednesday, February 9**

**Thursday, February 10**

9:00am  
9:30am  
6:00pm  
7:30pm

Men's Hiking Group  
Brunch Bunch Home of Margaret Messner  
Praise Team Sanctuary  
Choir Sanctuary

**Friday, February 11**

**Saturday, February 12**

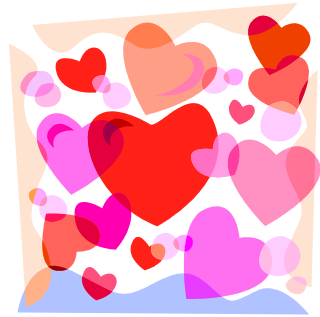
8:00am  
1:00pm

Men's Breakfast Plum Delicious  
Youth "Star Wars" Lock-in begins

**Sunday, February 13**

8:45am  
9:35am  
9:45am  
11:00am  
12:00pm  
12:15pm

*Sixth Sunday in Ordinary Time*  
**Worship** Sanctuary  
Hospitality  
Sunday School and Education Hour  
**Worship** Sanctuary  
Hospitality  
Handbells Sanctuary



### OFFICE HOURS

The office will be open Monday through Thursday from 9:00 a.m. to 4:00 p.m. and Friday from 9:30 a.m. to 12:30 p.m.

For information on any church activities, events or committees, call the office, 425-746-6111, or email us at [office@newportpres.org](mailto:office@newportpres.org) or visit our website, [www.newportpres.org](http://www.newportpres.org)



## Weekly Announcements

February 6, 2011

### Prayer Concerns and Support Opportunities

- **We have an active Prayer Chain.** If you have a concern for which you would like prayers, contact Carib Smallman, 206-588-1277, or Judy Schwab, 425-391-4167. To be listed in the printed list of prayer concerns, contact the church office, 425-746-6111.
- **Peace Candle:** The votive candle on the communion table is a prayerful reminder of those in danger in the Middle East, including our military and civilians and the people of Iraq, Afghanistan and other nations.

### Christian Education Opportunities—9:45-10:35 a.m.

Preschool Class – Room 25\*

K – 5<sup>th</sup> Grade – Room 29\*

\*Preschool and K-5 start in Room 27 for "Joyful Express" Children's Choir

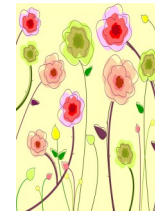
Youth (Mid and Senior High) – Youth Room (lower level)



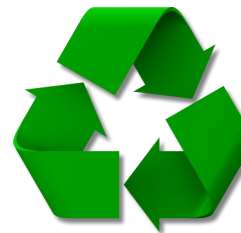
### Adults: Christian Education

- **Parenting Faithfully**—will meet informally in room 14—lower level
- **Paul—An Appealing or Appalling Apostle—Part 1 of 4—Great Hall**

**CREATIVE ARTS SHOW:** Be sure to pick up a (goldenrod) space reservation form today. They are on the welcome counter in the narthex. It will be held Saturday, March 5 in conjunction with the Dep dinner.



**FLOWER CHART:** The new flower chart is up and ready for you to sign up on that special date. Wedding anniversary? Baptism? Birthday? Or just to honor or remember someone — the occasions are endless. The chart is on the bulletin board to the left of the sanctuary entrance.



**NEWPORT GREEN:** The new Green Team has decided on a name and mission statement, set goals for the year and will continue the application process to become a Greening Congregation. Steps are being taken to improve our recycling process by clearly labeling containers.

Want to join? Contact Cindi Rezabek at [shadowrez@live.com](mailto:shadowrez@live.com).