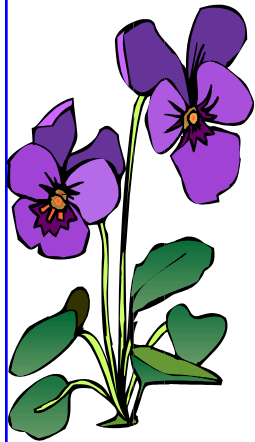


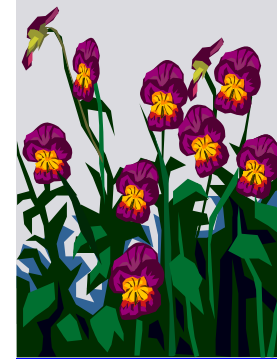
January 24-31, 2010

Today, Jan. 24	Third Sunday in Ordinary Time 10:00am Worship/Baptism 11:00am Congregational Meeting 12:15am Handbell Choir 4:30pm Mid High Youth Group	Sanctuary Sanctuary Sanctuary
Monday, Jan. 25	9:00am Men's Biking 1:00pm Grace Circle	Homes
Tuesday, Jan. 26	9:30am Lectionary Class 7:00pm Christian Education Committee 7:00pm Mission & Peacekeeping 7:15pm Membership & Hospitality 2:00pm 50 th Anniversary Planning Meeting	Room 14 Room 22 Chapel Library Library
Wednesday, Jan. 27		
Thursday, Jan. 28	9:00am Men's Hiking Group 9:30pm Brunch Bunch 6:00pm Praise Team 7:30pm Choir	Homes Sanctuary Sanctuary
Friday, Jan. 29		
Saturday, Jan. 30	8:00am Men's Breakfast	@ Plum Delicious
Sunday, Jan. 31	Fourth Sunday in Ordinary Time 8:45am Informal Worship/Baptism 9:35am Hospitality Time 9:45am Church school for all ages 9:45am Inquirers Class 9:45am Confirmation Class 10:35am Hospitality Time 11:00am Traditional Worship 12:00pm Hospitality Time 12:00pm Japan Trip Info 12:15pm Handbell Choir 2:00pm Memorial Service for Lucy Tuff 7:00pm Lay Musicians' Concert	Sanctuary Atrium Library Youth Room Sanctuary Chapel Sanctuary Sanctuary First Congregational



For information on any church activities, events or committees,
call the office, 425-746-6111,

or email us at office@newportpres.org or visit our website, www.newportpres.org



Welcome to
Newport Presbyterian Church
Welcoming in Spirit; Progressive in Theology
January 24, 2010

If you are visiting today, welcome!

- Please look in the Friendship Folders at the welcome desk in the Narthex for our visitor cards and ribbons. We invite you to wear the blue ribbon so we can get to know you, and to fill out the card and leave it in the offering plate. Please pick up a welcome bag in the narthex.

If you attend regularly

- Please give anyone wearing a blue "Visitor" ribbon your warmest Newport welcome.

Today at Newport

- **FRIENDSHIP COUNTER:** Please stop by today and sign cards for those in our congregation who need a greeting, a prayer, or a boost.

All-Church

- Next Sunday we resume our regular schedule with services at 8:45 (informal) and 11:00 (traditional).
- **OFFICE HOURS:** The office will be open Monday through Thursday from 9:00 a.m. to 4:00 p.m. and Friday from 9:30 a.m. to 12:30.

Adults

- **LECTIONARY CLASS** meets Tuesday at 9:30 a.m. in room 14.
- **INQUIRER'S CLASS**—Beginning next Sunday at 9:45 a.m. we will have a class for those interested in finding out more about what it means to be a member of a Presbyterian Church, and Newport Presbyterian Church in particular. This class will go for four weeks. There is no obligation to join after taking the class. Please contact Pastor Jim Patten if you are interested.



Prayer Concerns and Support Opportunities

- **We have an active Prayer Chain.** If you have a concern for which you would like prayers, contact Carib Smallman, 206-588-1277, or Judy Schwab, 425-391-4167. To be listed in the printed list of prayer concerns, contact the church office, 425-746-6111.

Save the Date



- **Inquirers classes** begin Sunday, January 31 in library
- **Lucy Tuff Memorial Service**—Sunday, January 31 at 2:00 p.m.
- **Annual Lay Musicians' Benefit Concert** at First Congregational Church on Sunday, January 31. (See below.)
- **Creative Arts Show** The Celebration of Newport's Creative Talent event will be Sunday evening, February 7. Start creating or selecting now for this festive appetizer supper and art show. Please fill out the goldenrod form today and turn into the office. Questions? Call Cindi Rezabek at (425) 746-9474.



A Concert for the New Year!

Aren't you ready for an evening of music and sharing your talents with others? The annual Lay Musicians' Benefit Concert will take place at 7:00 p.m. on Sunday, January 31. It will be held at the First Congregational Church of Bellevue, and the proceeds will go to benefit projects in South Africa and Haiti that our churches are heavily involved in. (What appropriate timing!)

This is the opportunity for closet, shy or otherwise constrained (but also unconstrained) musicians to emerge into the light to share their gifts and musical loves with the rest of us. This is the time to brush off that favorite and most meaningful piece and get it ready for us. This event has always been hugely enjoyable, so please contact Damon Meyer by email (damon.betty.meyer@gmail.com) or through the church regarding what you would like to offer.

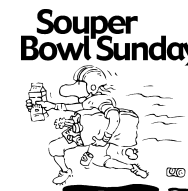
"Finding Hope Amid the Rubble of the Israel/Palestine Peace Process: What is the role and responsibility of Americans?"



A presentation by Dr. Jeff Halper
Our Lady of the Lake Church (Jubilee Hall)
8900 35th Ave NE, Seattle (Wedgwood area)
February 21 at 7:00 p.m.
Jeff's books will be on sale after 8:15 p.m.
(see flyer posted in hallway by library)

"SOUPer Bowl of Caring"

In 1990, a simple prayer prayed by a Presbyterian seminarian: *"Lord, even as we enjoy the Super Bowl football game, help us be mindful of those who are without a bowl of soup to eat,"* inspired a youth-led movement to help hungry and hurting people around the country. Since then, young people have raised over \$60 million for soup kitchens and foodbanks and other local help agencies. Newport's youth will be collecting non-perishable food and/or cash donations on February 7 following both worship services, and reporting our totals to the Souper Bowl of Caring organization. Your donations will be appreciated by the hungry of our community. Thank you!



Presbyterian Disaster Assistance in Haiti

The Presbyterian Church (U.S.A.) is responding to this earthquake through Presbyterian Disaster Assistance and its partners. Presbyterian World Mission is gathering information on the safety and status of our mission personnel and ecumenical partners in the area. Funds from One Great Hour of Sharing are already helping with the initial response. You can give to the ongoing relief through **PDA account number DR000064**. Gifts can also be made by phone at (800) 872-3283 weekdays between 8 a.m. and 6 p.m. (EST) and checks can be mailed to Presbyterian Disaster Assistance, P.O. Box 643700, Pittsburgh, PA 15264-3700.



Bridge Disability Ministries
invites you to their annual
Rock 'n Roll St. Valentine's Dance
Saturday, February 13 from 1:00—4:00 p.m.
Newport Covenant Church
12800 SE Coal Creek Parkway
(see flyer posted in hallway by library)