



Newport Presbyterian Church

November

Newport News

WORSHIP TIMES

8:45 a.m. Informal Worship

9:45 a.m. Sunday School & Adult Education

11:00 a.m. Traditional Worship

October 26, 2011

Welcoming in Spirit, Progressive in Theology

Phone: (425) 746-6111

Website: www.newportpres.org

Patten's Perspective

A message from Pastor Jim Patten

Hard Questions, Thoughtful Responses

I loved the questions people submitted on the cards we put in the bulletin this summer. If you came on September 18 you heard me respond to one of the questions. I promised then I would find a way to have a dialogue with members and friends of Newport around some of those questions and others that people might have. That process has now started. If you go to our website you will see a link called: *Hard Questions, Thoughtful Responses*. On that link is my first response to one of the questions asked: "Why did Jesus have to die for God to forgive us?" As you will see, I tried to be as honest as I could with my response according to how I look at theological tenets at this stage in my journey. I call it responses as opposed to answers. None of us have definitive answers to hard questions. We need each other as we ponder some of the depths of our religious beliefs and experiences of the Holy One. (There are now two responses.)

You can send me more questions via my email address: jimpatten@newportpres.org or you can reply to my responses via that email address. Hopefully this will enhance a dialogue around these important questions. I hope to put a new response up every few weeks as time allows. I love this kind of thing and hope you find it meaningful.

On another note, I also love reading short stories and talking about them with others. We have done this the past few Advents in our Adult Christian Education classes. We will do so again. I want to give you a heads up so you can begin reading some of these short stories for the class that begins the first Sunday of Advent, November 27th. Here is the schedule of stories in the book *Faith Stories* edited by C. Michael Curtis. You can find the book at Cokesbury or on Amazon.

November 27: "Young Goodman Brown"

by Nathaniel Hawthorne, pp. 38-50

December 4: "Cello"

by Remy Rougeau, pp. 189-206

December 11: "Sister Imelda"

by Edna O'Brien, pp. 131-149

December 18: "A Very Old Man with Enormous Wings"

by Gabriel Garcia Marquez, pp. 13-19

These are great stories that will provoke, I hope, great discussions. I am grateful for Al Smallman who will help me by teaching one of the classes while I am away.

Of course there are some meaningful worship services and events in November before Advent. Let me highlight just a couple:

November 6: Daylight Saving Time ends—fall back one hour

November 13: Pledge Sunday and a sermon on doing what we can to create a world without war

November 20: The last Sunday of the liturgical year and the Sunday we celebrate Thanksgiving.

(Continued on page 4)



"Gratitude"

*Nurtured By Our Faith Community,
We Respond in Gratitude*

Helen's Journey of Faith

"How does one share generously and still plan and save in a responsible manner for 'old age' and the unknown future?" That is a question I have been asking myself and others this past year. It has been a year of sorrow, change and adjustment. After 46 years of marriage I am single again, in fact, widowed. Often this year when I have thought of being widowed, I remember some of the Biblical stories where the widows are usually penniless and among the most vulnerable of people.

Thankfully, my situation is not like that of those widows. Because he was an ordained minister Jerry had a retirement pension and I have a survivor's pension from the Board of Pensions of the Presbyterian Church. We both had social security income and access to Medicare, a few annuities, and I realized some equity when the house sold this spring. I am blessed with an adequate income (as long as I stay within my budget).

Another way my life differs from many of the Biblical widows is that throughout this time of change and adjustment I have had the strong support of family, friends and the community of Newport Presbyterian Church. I cannot imagine how difficult it would be to go through times of sorrow and hardship without love, prayer and caring from God's people.

Someone once said, *"I don't know what the future holds, yet I know who holds the future."* Because of gratitude for all my past, present and future blessings: income, family, health, medical care and the nurturing which comes from my faith community, I can only respond generously in gratitude as I make my pledge for 2012.

~ Helen Nash

Katie's Journey of Faith

I am grateful to be a member of Newport Presbyterian Church and I would like to share my story of how this faith community has positively impacted my life. I was a stay-at-home mother when my husband was laid off from an engineering position during the recent financial crisis. Throughout the recession, I couldn't help but keep tabs on how my family was faring in comparison to others. I remember the discomfort I felt on my birthday when I looked around a table of friends and realized I was the only one whose family was living on unemployment. It was a lonely experience.

At home, arguments ensued about who should look for work and where. There was disappointment on both sides. After more than a year of getting by, I began to feel a mounting sense of urgency for change. One evening I drew a hot bath and I submerged my head under the water. My thoughts were, "Please God, help me." As I re-emerged from the water, I felt less anxious and more enthusiastic. I knew what to do. It was hard for me to understand why my husband was so angry when I was feeling as if a weight had been lifted. Shortly after drying off from my bath, I told my husband the plan. First we would tap our small savings to buy a second vehicle. I would go to work for my parents and we would enroll our son in the YMCA childcare. We would separate our bank accounts and split our bills. Oh, and we were going to church every Sunday!

Within weeks Patrick and I arrived at Newport. Surprisingly, Patrick seemed to enjoy church. We noticed how we were in a better mood on the car ride home from church, than on the way there. At church, we were reminded of all the things we had to be grateful for—namely each other. It felt like a new beginning. After working the holiday season at *Best Buy*, Patrick was able to return to work as a structural engineer. Eventually I transitioned to a counseling position. Finances are still a little tight and my husband continues to pay more than his share of the bills. Ironically, I am working full-time. My son frequently reminds me he would rather stay home with me than go to childcare. However, I enjoy my job and we feel safe. We are grateful for each other, our work and our church. We believe in God. Newport reminds us of how far we have come.

When I reflect on how I was feeling when we first joined Newport, I remember feeling bitter. I had never really been a bitter person. It was an unpleasant feeling and I didn't want bitterness in my life, but it was there. I'm feeling less bitter now and I think the community at Newport Presbyterian helped with that. When we focus on gratitude, we are thankful for what we have, instead of focusing on what we don't have.

Last year at Christmastime, my friend Samantha was talking about a conversation she had with her children. Her kids did not understand why they were buying gifts to put under the Giving Tree when they had less than most of the other families in their neighborhood. Samantha put it very simply, "There will always be people who have more and there will always be people who have less." I was touched by her words because I hadn't put anything under the tree. At church we learn gratitude from each other. We are thankful that Newport is here for us and our pledge is an opportunity to express our gratitude.

I'm grateful for this church community. Thank you.

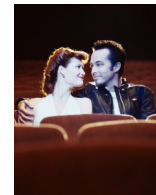
~ Katie L.



AN AFTERNOON ON THE TOWN??

Hello all Parents!

The Newport Youth Group would like to offer to watch your children on Sunday, November 13 from 3:30-6:30 p.m. at Newport Church. We will serve them dinner as well! We would like to offer this time as a gift to all of you wonderful parents so you can go on a date, Christmas shop or just hang out. There will be a sign-up sheet on the bulletin board downstairs in the Youth Room. Please fill out a child health/information form below the sign-up sheet so we can know how best to care for your children. If you can not find the sign-up sheet or health form, please e-mail Jason Asher at jasonasher88@gmail.com and let him know how many kids, ages, your cell phone and any health information he may need to know. We have 15 spots available.



A POLITE “NO THANK YOU”

In the process of cleaning and organizing the church library, it has come to light that unknown folks have dropped off donations of books to add to our shelves. Unfortunately, we are unable to accept them. While Newport’s library has a wonderful collection of books on its shelves, usage over the years has declined, and we no longer add, catalog or cull books on an ongoing basis. Folks are still most welcome to borrow books and return them, all without signing a check-out card, or to come, sit and read at your leisure!



If you are one of our generous, anonymous donors of books, and would like to retrieve them for another purpose, they are in boxes on the bottom shelves to the right of the library desk. Those that are not picked up will be given away. Thank you for your understanding.

IN OUR PRAYERS

- Larry Wood** (health concerns)
- Frances Peppard** (pulmonary issues)
- Sam Waalkes**
- Karen Waalkes** (recovery from surgery)
- Greg Waite**

(continued from page 1)
Patten’s Perspective

The worship committee decided to not have a Thanksgiving Eve service this year. It has not had a large attendance in the past few years. Many travel or are making plans to receive guests or make a big meal on that night. That means few get to hear about the 5th kernel we hand out each Thanksgiving. That is a beloved tradition where we celebrate some aspect of Newport’s life in the past year and give thanks. Doing that on a Sunday will include so many more people and make Thanksgiving Eve much less busy and stressful. I look forward to this new tradition being started this year.

As always I hope to see you in worship. We need your presence and your journey of faith will benefit from worshipping with this vibrant, healthy community we call Newport Church.

Jim



“Christmas at Newport”

We hope you will join us on Sunday, November 27 from 12:00–1:30 p.m. for our annual tradition “Christmas at Newport.” The event includes a delicious meal, nativity craft for all ages, greening of the church and a carol-sing. Save the date and come, mark the first Sunday in Advent in this very special way!

Would you like to be a member of the Green Team as we continue to make creation care part of the faith fabric at Newport? We are a "committee" that works only through conversation and e-mail. Since beginning last winter we've celebrated with an outdoor service in August where an Earth Ministry representative awarded us a banner (now on display in an atrium cove) and with a designation on our website. Items completed are on a comprehensive outline which you may request at shadowrez@live.com. Narthex/Atrium recycling containers that match the decor, attractive and obvious, are now in the planning phase. We continue to encourage everyone to explore our nature path, chapel in the woods and wetlands to marvel at nature's beauty and constant changes. All members are urged to go to the Earth Ministry website and to the Environment@psusa.org for ideas you may want to initiate at Newport.



STOVE TEAM INTERNATIONAL

A booth for a new cause will have its premiere opening at this year's Alternative Gifts Fair. Stove Team International saves lives in the developing world by establishing locally owned, sustainable factories that produce durable, safe, efficient wood-burning cook stoves. Open cooking fires cause burns, deforestation and respiratory illnesses that kill nearly two million people a year.

The Ecocina stove reduces wood use by over 50% and air pollution and carbon emissions by 70%. It reduces burns, respiratory, eye and skin problems. The stoves are low cost and built from all local materials and are adapted to local cooking customs. One stove for a family costs \$50, but all donation amounts are accepted.



NEWPORT'S ALTERNATIVE GIFTS FAIR
Taking a Step Toward Peace

Sunday, November 20, 2011
9:30 a.m. – 1:00 p.m.



Newport's Alternative Gifts Fair is the perfect place to purchase your gifts and at the same time take a step toward peace! One of the first steps in creating peace is to ensure all people have their basic needs met. By purchasing Fair Trade items and gifts of animals, clothing, school supplies, etc., you will help to provide others with their basic needs both locally and globally. This year's fair will also include a special table for items made by members at Newport with proceeds going to the charitable organization of their choice.

Some of the charitable organizations that will be represented include:

- Treehouse ~ Hopelink ~ Serrv International ~ Heifer International
- Eastside Domestic Violence ~ Church World Service ~ Church of Mary Magdalene
- Emergency Feeding Program ~ Habitat for Humanity ~ Homes for Haiti
- Hospitality House ~ Pal Craftaid

100% of the proceeds will go to the charitable organizations.

Make a difference locally and globally... and relax with all your shopping done!

Volunteers are needed.

Contact Lisa Sargent at sargette@yahoo.com or (425) 255-3731.



Gather around the Treehouse for Christmas

Dear Newport,

Thank you again for all your support of Treehouse! With Christmas just around the we have many ways to support foster kids through Treehouse. Questions? Feel free to call or email Linda Hunter at (425) 644-2455 or ldhunter@kpmg.com.

Linda Hunter



Host a Holiday Donation Drive or Throw a Party for Treehouse

Rally family, friends, neighbors and coworkers to help keep the Warehouse stocked with new toys and warm clothing this holiday season. Hosting a festive holiday donation drive or holiday party is easy and fun—Treehouse provides you with all the information and materials you need to succeed including posters, wish lists, tree tags and tips from past hosts. Learn more by emailing drives@treehouseforkids.org or call Lindsay at (206) 267-5109.

The Warehouse Holiday Helpers

The Warehouse will be open for extended shopping hours this holiday season so we need extra help sorting donations and stocking the store with toys and clothes. This is a great opportunity for individuals and groups of friends. Volunteer shifts fill up fast so sign up today at <http://treehouseforkids.kintera.org/HolidayHelper> or call Meaghan at (206) 267-5117.

Take a Turn at the Carousel

The KING 5 Wonderland Holiday Carousel in Westlake Plaza will benefit Treehouse again this year. Join us for a volunteer shift at the carousel and greet riders, collect donations and sell tickets. The Holiday Carousel will run from the day after Thanksgiving until December 31. This is a great volunteer activity for families. Sign up online at <http://treehouse.kintera.org/horses> or by e-mailing carousel@treehouseforkids.org.



News Talk 97.3 KIRO FM Holiday Magic Radiothon

Help foster kids throughout Washington have a happy holiday by answering phones during our annual 14-hour radiothon. Shifts are available December 8 from 4:45 a.m. to 7:00 p.m. It's as easy as picking up the phone. If you're an early bird we have the perfect shift for you. Sign up today online at <http://KIRO.kintera.org/holidaymagic> or by e-mailing volunteer@treehouseforkids.org.

(I'll be at the 4:45 p.m. shift—Linda)

ATRIUM ART GALLERY

Through the ages the Church has served as a venue for creative endeavors. Newport Presbyterian Church will soon continue this tradition through an upcoming Atrium Art Gallery, providing space where the movement of the Spirit is experienced through the Arts. Beginning in Advent, the Atrium Art Gallery will provide space, on a rotating basis, for the showing of works of visual art. It is anticipated that these exhibitions will provide spiritual enrichment and liveliness for those attending the church and its functions. At the same time the gallery provides an opportunity for artists to show and share their work. Watch for upcoming information!

CONTRIBUTION STATEMENTS

Trying something new, efficient and less costly—are you interested?

We would like to try something new at Newport in an attempt to save money and time. You should have received an email asking if we may email your contribution statement to you rather than sending it by regular mail. If you are willing, we greatly appreciate your participation in this method of statement delivery as we hope it will mean a more efficient, cost-effective process for sending out statements in the future.

If you **do want** us to send your contribution statements by e-mail, please respond to the e-mail noted above stating, "**send statements by email.**" If you definitely **don't** want email statements, please respond by stating, "**mail paper statement.**" If hitting "**reply**" to the email doesn't work, please send your response to Helpmate@newportpres.org. This e-mail has been set up to handle your replies in a direct and confidential manner.

We hope to get statements sent out for the year-to-date in early November, so your prompt reply would be appreciated.

In peace,
Athena Panos
Stewardship Secretary



P.S. If you did not receive this email, we may have an incorrect email address for you. Please notify the office so we can correct our records and get your response for your statement delivery.

Circles and Meeting Times

Deborah Circle

Leader: Cindi Rezabek
Third Tuesday, 12:30 p.m.

J.O.Y. Circle

Leader: Barbara Baxter
First Thursday, 10:30 a.m.

Grace Circle

Leader: Helen Nash
Fourth Monday, 1:00 p.m.

Ruth Circle

Leader: Lucy Harms
First Monday, 10:00 a.m.

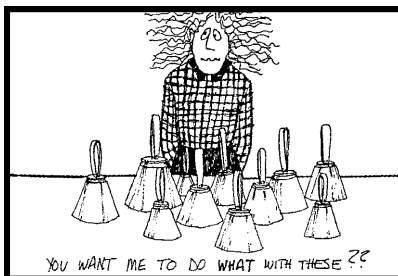
Hope Circle

Leader: Dori Yang
Third Wednesday, 7:00 p.m.

Brunch Bunch

Leaders: Dee Tucker,
Martha Garmanian
Second & Fourth Thursday,
10:00 a.m.

Remember—to join a circle you just need to show up. You may also form your own circle with friends who may need a more convenient time.



Don't forget to change your clocks for the end of Daylight Saving Time on Sunday, November 6.

Also, due to the number of activities during November that affect the office (stewardship letters, contribution statements, etc.) I am asking for a **Newsletter deadline of Wednesday, November 9** for your items. Thank you for your cooperation.

Did you know...

our church is on Facebook?

For members and friends who are on Facebook:



Check out our Facebook page,
Newport Presbyterian Church
and click on "like"

to get updates on the latest activities.



“MAKING PEACE A REALITY”

NOVEMBER 6, 13 & 20

9:45-10:35 IN THE CHAPEL

Plan on attending the series of classes on “Making Peace a Reality” taught by Dave Gallotte, Rob McClure, Dori Yang and Tony Copes. The classes will give you hope that we (the human race) can achieve a world at peace, starting by changing our own individual attitudes. It will take time but by what we do or do not do now, we are shaping the future for our distant descendants. This class will be based on the slim book, *Living Beyond War: A Citizen's Guide* by Winslow Myers and Brian Swimme. Dori Yang and Tony Copes have copies of the book available for \$10 each.



LAY MUSICIANS' CONCERT 2012

The date has been set (Sunday, January 29 at 7:00 p.m.) and the location (First Congregational Church of Bellevue) so it's time to dig out your music, dust off your instrument and begin practicing for your performance.

This is a fun way to raise funds while enjoying music presented by your friends and neighbors from Newport and First Congregational. This is one of the best events of the year!

Questions? Contact Damon Meyer.

Lectionary Readings

November 6

32nd Sunday in Ordinary Time

Joshua 24:1-3a, 14-25; *Psalms* 78:1-7; I Thessalonians 4:13-18; Matthew 25:1-13

November 13

33rd Sunday in Ordinary Time

Judges 4:1-7; *Psalms* 123; Matthew 5:38-48

November 20

Christ the King Sunday

Ezekiel 34:11-16, 20-24; *Psalms* 100; Matthew 25:31-46

November 27

First Sunday of Advent

Isaiah 64:1-9; *Psalms* 80:1-7, 17-19; I Corinthians 1:3-9; Mark 13:24-37

Born on Monday, Fair in Face;

Born on Tuesday, Full of God's Grace;

Born on Wednesday, Sour and Sad;

Born on Thursday, Merry and Glad;

Born on Friday, Worthily Given;

Born on Saturday, Work Hard for Your Living;

Born on Sunday, You Will Never Know Want.



11/1—Linda Vaughn

11/1—Will Winslow

11/2—Lisa Anderson

11/2—Don Hightower

11/3—Connie Aramaki

11/4—John Huber

11/5—Karen Aramaki

11/5—Lyn Lambert

11/5—Patsy Benson

11/6—Will Carlson

11/6—Ian Williams

11/9—Sue Mattson

11/11—LeeAnne Knechtel

11/14—Holly Hallman-

Dunlap

11/15—Robert Dalton

11/15—Jeff Nord

11/16—Brenden Boys

11/16—Betty Meyer

11/18—Cameron Boys

11/18—Rebecca Nord

11/18—Sharon Roos

11/20—Ian Chivers

11/21—Lois Fish

11/21—Doris Strom

11/21—Roger Wierenga

11/23—Bea Polinsky

11/23—Alina Swift

11/23—Dorothy Wood

11/24—Dan Gaugel

11/24—Kamila Huber

11/28—Karl Kaucher

11/30—Athena Benjamin

11/30—Ken Crowder

If you have a November birthday and are not listed, please notify the office so we can include you next year.

YOUTH GROUP CALENDAR FOR NOVEMBER

November 6

☺ Sunday School—9:45-10:35

☺ Youth Group—5:30-7:30 p.m. Focus is the book of Acts.

November 13

☺ Sunday School—9:45-10:35

☺ “Lazy Sunday”—10:30 a.m.-3:30 p.m.

☺ PIPS Child Care—3:30-6:30 p.m. We will be serving the parents of our congregation by watching their children for a few hours so they can have a date or do Christmas shopping.

☺ Youth Group—6:30-8:30 p.m. Dinner at 6:30. Focus is the book of Romans.

November 20

☺ Alternative Gift Fair—Selling Fair Trade Coffee; Kid's Table; Sound View Table

☺ Youth Group—5:30-7:30 p.m. Focus is on the book of I Corinthians.

November 27

☺ Sunday School—9:45-10:35

☺ No evening Youth Group



NICKELSVILLE—TENT CITY SEATTLE BUILD PROJECT

How does living in an 8 ft. x 12 ft. plywood building sound to you? Probably not very good unless you're living on the bare ground in a tent. That's the "upgrade" that the Interfaith Taskforce on Homelessness and Share/Wheel are piloting at Nickelsville Tent City in Seattle.

A team of five Newport Super Builders led by Will Winslow tackled building the third of these simple sleeping shelters designed by a Seattle architect. The project, funded by \$1,200 for materials from our Undesignated Mission Budget line item, was completed in a day thanks to a very savvy member of the team and some assistance from three Nickelsville residents (Nickelodeons). In addition to Will, the Newport Super Builder Team was Roger Bedell, Bill Iverson, Jack Roos and Rich Williams (friend of Will's from Newport's D'Iberville and Oakville projects).

Thank you Newport for your support of our 2011 Mission Budget that made this possible.

~ Mission & Peacemaking Committee

Newport Presbyterian Church Mission & Peacemaking Disbursements July—September 2011



Church World Service	\$1,000.00
Congregations for the Homeless	2,000.00
Congregations for Kids	500.00
From Deacon's Fund	400.00
Hopelink	3,000.00
Hopelink (from Christmas Flowers 2010)	112.30
Nonviolent PeaceForce	1,000.00
Presbyterian Church (USA) Disaster Fund	1,000.00
Presbytery of Seattle (General Assembly)	3,249.99
Presbytery of Seattle (Presbytery)	1,749.99
Renewal Food Bank	500.00
Sophia's Way	45.00
Sound View Construction Project	196.43
Tent City Dinner	207.38
Treehouse	1,000.00
Total	\$15,961.09

A great group of persuasive volunteers collected over 10 barrels of food and \$335 in cash for the Emergency Feeding Program from Factoria QFC customers on the Mayor's Day of Concern for the Hungry Food Drive on September 24.

A big round of applause is due the following volunteers: *Barbara Baxter, Tony Copes, Ken Crowder, Ginny Crowder, Peggy Felton, Lu Iverson, Yvonne Johnson, Midge Lopez, Jim Patten, Jayne Ranheim, Ron Ranheim, Lisa Sargent, Martha Schroeder, Jackie Tanner and Barbara Welsh.*

Emergency Feeding estimates that the total amount of food collected countywide at 53,100 pounds (about 26.5 tons). Our team collected 1,500 pounds at the Factoria QFC.

~ Nancy Ellingham



R E A C H I N G O U T

Support our Homeless and Jobless Veterans at Newport's Alternative Gifts Fair

Newport women will be selling gifts to help the growing number of homeless and jobless veterans and their families. A variety of items will be available for sale and 100% of the earnings will be donated. Some of the items are listed below and additional items may be added. (All items must be new.)

- ◆ Hand-crafted notecards
- ◆ Quilted placemats
- ◆ Quilts
- ◆ Handmade scarfs
- ◆ Holiday Teddy Bears

For further information contact Bea Polinsky at (425) 746-6923.

The Compass Veterans Center in Renton is working to support employment, mental and physical health needs, counseling and children's programs for the veterans and their families. The facility includes 38 studio apartments, 20 two and three bedroom apartments, play area for children, teen recreation room, community kitchen, computer lab and library. The library is in need of children's, teen and adult books. Bea and Don will deliver donated books. Call Bea for further info.

Mary's Place Current Wish List

- ◆ Canes (new & used)
- ◆ Umbrellas & rain ponchos
- ◆ Cold medications
- ◆ Antacids—Tums, Pepcid, etc.
- ◆ Toothbrushes & toothpaste
- ◆ Incontinence products
- ◆ Feminine hygiene items
- ◆ Hair products for black hair
- ◆ Manicure tools & supplies
- ◆ Coffee
- ◆ Denture adhesive
- ◆ Shampoo, conditioner & bath gel
- ◆ Diapers, pull-ups & baby wipes
- ◆ Socks (new & used)
- ◆ Batteries
- ◆ Bras & underwear (all sizes)

Clothing Items Needed for Homeless and Jobless

As the weather gets colder—the need gets greater! New and gently-used items for men and women may be placed in the large Christmas box in the narthex. Some needed items for men and women (mostly large sizes) are:

- ◆ Sweatshirts (dark colors)
- ◆ Coats
- ◆ T-shirts
- ◆ Gloves
- ◆ Hats and Scarves
- ◆ Crew sox (men) & warm sox for women
- ◆ Playing cards
- ◆ Flashlights
- ◆ Tote bags & backpacks

Special needs for the Compass Center are:

- ◆ Towels
- ◆ Sox
- ◆ Toothbrushes, toothpaste
- ◆ Small soaps
- ◆ Shampoo
- ◆ Lotion
- ◆ Shoes (gently worn for men, women & children)

The Compass Alliance will be opening two new housing facilities for veterans in the next few months. The need becomes greater each year. To help with this program please call Bea Polinsky.

Prayer Concerns and Support Opportunities

We have an active Prayer Chain. If you have a concern for which you would like prayers, contact Carib Smallman at (206) 588-1277 or Judy Schwab at (425) 391-4167. To be listed in the printed list of prayer concerns, contact the church office at (425) 746-6111. *Reminder: Please obtain permission if you wish to add a friend or family member to the Prayer Chain.*

See the list of Circles and Meeting Times
on page 7

November 2011

Sun	Mon	Tue	Wed	Thu	Fri	Sat																																																	
<p>Hospitality is offered before and after worship services</p>  <p>DAYLIGHT-SAVING TIME ENDS</p>		<p>1 No Lectionary</p>	<p>2 6:00pm Salad Bowl meeting 7:00pm Worship Committee in Chapel 7:00pm Property Committee in Library</p>	<p>3 9:00am Men's Hiking 10:30am J.O.Y. Circle in Library 6:00pm Praise Team 7:30pm Choir</p>	<p>4 4:30-6:00pm Children's Drumming & Dinner 4:30-6:00pm Drum & Pub</p> 	<p>5 7:30am Men's Breakfast at Plum Delicious</p> <div style="border: 1px solid black; padding: 5px; text-align: center;"> <p>Be sure to change your clocks tonight!</p> </div>																																																	
<p>6 Communion 8:45am Informal Worship 9:45am Education Hour 11:00am Traditional Worship 12:15pm Bell Choir 5:30-7:30 Youth</p>	<p>7 9:00am Men's Biking 10:00am Ruth Circle in Library 7:00pm Stewardship & Finance in Library</p>	<p>8 9:30am Lectionary in room 14 10:30 PW Board In Library 7:00pm Session in Chapel</p>	<p>9 EARLY NEWSLETTER DEADLINE</p>	<p>10 9:00am Men's Hiking 10:00am Brunch Bunch at home of Velda Kant 1:00pm ACE in Library 6:00pm Praise Team 7:30pm Choir</p>	<p>11 Veterans Day Office Closed</p>  <p>VETERANS Day</p>	<p>12 7:30am Men's Breakfast at Plum Delicious</p>																																																	
<p>13 Pledge Sunday 8:45am Informal 9:45am Education 10:30-3:30 Youth Lazy Sunday 11:00am Traditional 12:15pm Bell Choir 3:30-6:30 Parents' afternoon out 5:30-7:30 Youth</p>	<p>14 9:00am Men's Biking 10:30am Caregivers in Library</p>	<p>15 9:30am Lectionary in room 14 10:45am Stephen Ministry in room 14 12:00pm AIDS Care Team 12:30pm Deborah Circle in Library 5:00pm Presbytery at Mercer Island Pres.</p>	<p>16 7:00pm Hope Circle in homes</p>	<p>17 9:00am Men's Hiking 6:00pm Praise Team 7:30pm Choir 7:00pm Personnel in Library</p>	<p>18  4:30-6:00pm Drum & Pub</p>	<p>19 7:30am Men's Breakfast at Plum Delicious</p>																																																	
<p>20 Blessing of the Hats & Scarves 8:45am Informal Worship 9:45am Education Hour Alternative Gift Fair 11:00am Traditional Worship 12:15pm Bell Choir 5:30-7:30 Youth</p>	<p>21 9:00am Men's Biking 10:30am Caregivers in Library</p>	<p>22 9:30am Lectionary in room 14 7:00pm Christian Education in room 22 7:00pm Mission & Peacemaking</p>	<p>23</p>	<p>24 Thanksgiving Office closed</p> 	<p>25 Office closed</p>	<p>26 7:30am Men's Breakfast at Plum Delicious</p>																																																	
<p>27 8:45am Informal Worship 9:45am Education Hour 11:00am Traditional Worship 12-2pm Christmas at Newport 12:15pm Bell Choir</p>	<p>28 9:00am Men's Biking 1:00pm Grace Circle in homes</p>	<p>29 9:30am Lectionary in room 14</p>	<p>30</p>	<p>Please join us in the Atrium before and after worship for coffee and fellowship</p>		<table border="1"> <thead> <tr> <th colspan="7">December 2011</th> </tr> <tr> <th>S</th> <th>M</th> <th>T</th> <th>W</th> <th>T</th> <th>F</th> <th>S</th> </tr> </thead> <tbody> <tr> <td></td> <td></td> <td></td> <td>1</td> <td>2</td> <td>3</td> <td></td> </tr> <tr> <td>4</td> <td>5</td> <td>6</td> <td>7</td> <td>8</td> <td>9</td> <td>10</td> </tr> <tr> <td>11</td> <td>12</td> <td>13</td> <td>14</td> <td>15</td> <td>16</td> <td>17</td> </tr> <tr> <td>18</td> <td>19</td> <td>20</td> <td>21</td> <td>22</td> <td>23</td> <td>24</td> </tr> <tr> <td>25</td> <td>26</td> <td>27</td> <td>28</td> <td>29</td> <td>30</td> <td>31</td> </tr> </tbody> </table>	December 2011							S	M	T	W	T	F	S				1	2	3		4	5	6	7	8	9	10	11	12	13	14	15	16	17	18	19	20	21	22	23	24	25	26	27	28	29	30	31
December 2011																																																							
S	M	T	W	T	F	S																																																	
			1	2	3																																																		
4	5	6	7	8	9	10																																																	
11	12	13	14	15	16	17																																																	
18	19	20	21	22	23	24																																																	
25	26	27	28	29	30	31																																																	



NEWPORT PRESBYTERIAN CHURCH
 4010 120th Ave SE
 Bellevue WA 98006-1199



NON-PROFIT ORG
 U.S. Postage
 PAID
 Bellevue, WA
 Permit No. 68

RETURN SERVICE REQUESTED



Patten's Perspective	1
Faith Journeys	2, 3
Alternative Gift Fair	5
Treehouse	6
November Birthdays.....	8
Presbyterian Women.....	10
October Calendar	11

STAFF E-MAIL DIRECTORY	
Jim Patten	jimpatten@newportpres.org
Janet DeWater	janetdewater@newportpres.org
Rhonda Juliano	rjuliano@newportpres.org
Jason Asher	jasonasher88@gmail.com
Pam Zipoy	office@newportpres.org
Susan Jorgensen	susanjorgensen@newportpres.org
Church Office	office@newportpres.org

NewsLetter
DEADLINE

**Deadline for December
 Newport News
 Wednesday, November 9**